

# B

## Hazard Mitigation and Emergency Plans/Routes

<b>Table B-1:</b> Hazard Mitigation Plans .....	B2
<b>Table B-2:</b> Emergency/Evacuation Plans.....	B3
<b>Figure B-1:</b> McGuire Nuclear Station (Mecklenburg County) Emergency Planning Zones and Reception Centers.....	B4
<b>Figure B-2:</b> McGuire Nuclear Station (Mecklenburg County) Evacuation Routes and Reception Centers .....	B5
<b>Figure B-3:</b> Strategic Highway Network (STRAHNET) Routes.....	B9

**TABLE B-1 | HAZARD MITIGATION PLANS**

PLAN NAME	PLAN PREPARED BY	YEAR	PARTICIPATING JURISDICTIONS IN CRTPO PLANNING AREA
Mecklenburg County Hazard Mitigation Plan <sup>1</sup>	Charlotte-Mecklenburg Emergency Management Office	2015	Mecklenburg County
			City of Charlotte
			Town of Cornelius
			Town of Davidson
			Town of Huntersville
			Town of Matthews
			Town of Mint Hill
			Town of Pineville
Cabarrus Stanly Union Regional Hazard Mitigation Plan <sup>2</sup>	Town of Harrisburg Emergency Preparedness	2015	Town of Fairview
			Town of Hemby Bridge
			Town of Indian Trail
			Village of Lake Park
			Village of Marshville
			Town of Marvin
			Town of Mineral Springs
			City of Monroe
			Town of Stallings
			Town of Unionville
			Town of Waxhaw
			Town of Weddington
			Village of Wesley Chapel
Town of Wingate			
Iredell Rowan Regional Hazard Mitigation Plan <sup>3</sup>	Rowan County Emergency Management	2015	Town of Harmony
			Love Valley
			Town of Mooresville
			City of Statesville
			Town of Troutman

1 Source: <http://charlottenc.gov/EmergencyManagement/Plans/HazardMitigationPlans/2015Plan/Documents/2015%20Multi-Jurisdictional%20Hazard%20Mitigation%20Plan%20-%20Mecklenburg%20County,%20North%20Carolina.pdf>

2 Source: [https://www.harrisburgnc.org/sites/default/files/\\_Planning\\_Zoning/cabarrus\\_stanly\\_union\\_reg\\_hmp\\_final\\_01122015.pdf](https://www.harrisburgnc.org/sites/default/files/_Planning_Zoning/cabarrus_stanly_union_reg_hmp_final_01122015.pdf)

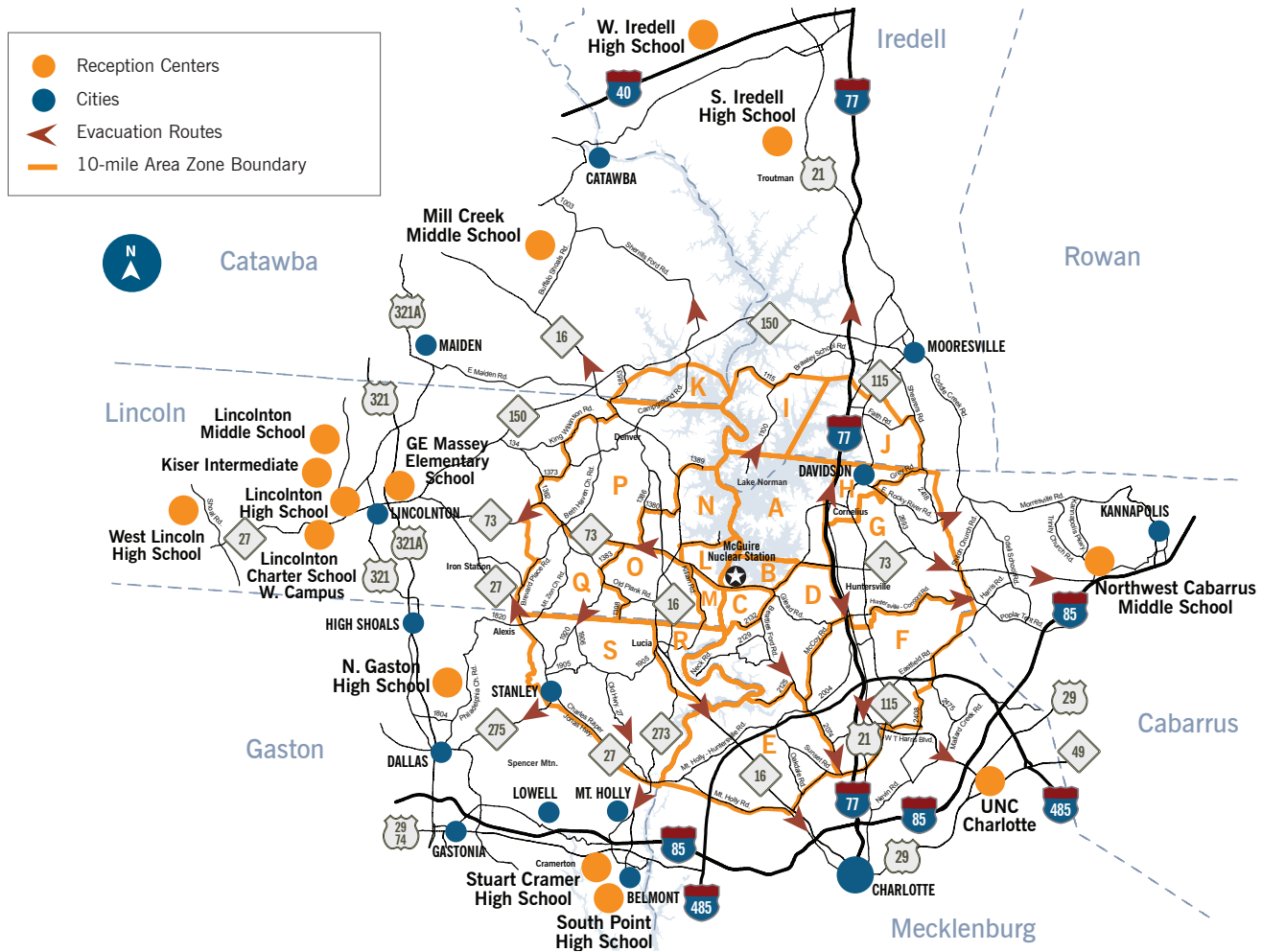
3 Source: <http://www.eplanonline.com/iredell2/webver/Mitigation/IredellRowanMitigationPlan.pdf>

**TABLE B-2 | EMERGENCY/EVACUATION PLANS**

PLAN NAME	SOURCE
City of Charlotte Uptown Evacuation Plan	<a href="http://charlottenc.gov/EmergencyManagement/Plans/Pages/default.aspx">http://charlottenc.gov/EmergencyManagement/Plans/Pages/default.aspx</a>
Mecklenburg County Emergency Operations Plan	<a href="https://charmeckem.net/">https://charmeckem.net/</a>
Iredell County Emergency Operations Plan	<a href="https://www.co.iredell.nc.us/265/Emergency-Management">https://www.co.iredell.nc.us/265/Emergency-Management</a>
Union County Emergency Operations Plan	<a href="http://www.co.union.nc.us/departments/public-safety/emergency-management">http://www.co.union.nc.us/departments/public-safety/emergency-management</a>

**FIGURE B-1 | MCGUIRE NUCLEAR STATION (MECKLENBURG COUNTY) EMERGENCY PLANNING ZONES AND RECEPTION CENTERS**

Emergency Planning Zones and Reception Centers





### Evacuation Routes and Reception Centers for the General Public

Zone	Communities	Primary evacuation route	Reception centers
<b>A</b>	I-77 at the Iredell Co. line to Sam Furr Rd., west on Hwy. 73 including Jetton Rd., Bethel Church Rd., Torrence Chapel Rd. and Tuskarora Tr.	<ul style="list-style-type: none"> <li>I-77 North to Exit 45, to reception centers.</li> <li>Brawley School Rd. (SR1100) north to Williamson Rd. (SR1109). Williamson Rd. (SR1109) north to NC 150. NC 150 east to I-77. North on I-77 to Exit 42 to the reception centers.</li> </ul>	<p>South Iredell High School</p> <p>West Iredell High School</p>
<b>B</b>	Hwy. 73 to Sam Furr Rd., to Lincoln Co. line including Browns Cove area, Norman Island Dr. area, Windaliere Dr., Mariner Cove Dr., Sunset Dr., Cramur Dr., Henry Ln.	<ul style="list-style-type: none"> <li>NC 73 to Sam Furr Rd. East on NC 73 to Kannapolis Parkway. North on Kannapolis Parkway to Trinity Church Rd. Turn left to enter reception center.</li> </ul>	Northwest Cabarrus Middle School
<b>C</b>	Hwy. 73 at Lincoln Co. line to Beatties Ford Rd. to Stephens Rd. including Hubbard Rd., Brown Mill Rd. and Cashion Rd.	<ul style="list-style-type: none"> <li>Beatties Ford Rd. south to I-85. I-85 north to NC 49. North to reception centers.</li> </ul>	UNC Charlotte
<b>D</b>	Sam Furr at Hwy. 73 to I-77 to McCoy Rd. to Beatties Ford Rd. to Latta Plantation Park to the Catawba River up to Stephens Rd. to Beatties Ford Rd. to Hwy. 73 back to Sam Furr Rd.	<ul style="list-style-type: none"> <li>Beatties Ford Rd. south to I-85. North to NC 49. North to reception centers.</li> <li>Gilead Rd. to I-77. I-77 south to I-85. I-85 north to NC 49. North to reception centers.</li> </ul>	UNC Charlotte
<b>E</b>	Catawba River at Hwy. 16 down to the river to Mt. Holly Rd. (Hwy. 27) to Rozzelles Ferry Rd. to Oakdale Rd. to Beatties Ford Rd. to Latta Plantation Park back to the Catawba River	<ul style="list-style-type: none"> <li>NC 27, NC 16 or Beatties Ford Rd. south to I-85, to NC 49. North to reception center.</li> </ul>	UNC Charlotte
<b>F</b>	Sunset Rd. at Beatties Ford Rd. to McCoy Rd. to Gilead Rd. to Statesville Rd. (Hwy. 21) to Huntersville city limit, over to Huntersville-Concord Rd. to the Cabarrus Co. line, to Eastfield Rd. to Prosperity Church Rd. to Dearmon Rd. to Old Statesville Rd. (Hwy. 115) back to Sunset Rd. and Beatties Ford Rd.	<ul style="list-style-type: none"> <li>US 21, I-77 or Beatties Ford Rd. south to I-85, to NC 49. North to reception center.</li> <li>W.T. Harris Blvd. to NC 49. North to reception center.</li> </ul>	UNC Charlotte
<b>G</b>	I-77 and Gilead Rd. to the Cornelius city limits, follow the city limits to Grey Rd. to the Iredell Co. line to the Cabarrus Co. line to Huntersville-Concord Rd. to Huntersville city limits back to I-77 and Gilead Rd.	<ul style="list-style-type: none"> <li>East on NC 73 to Kannapolis Parkway. North on Kannapolis Parkway to Trinity Church Rd. Turn left to enter reception center off Trinity Church Rd.</li> <li>Huntersville-Concord Rd. to Poplar Tent Rd. Poplar Tent Rd. to Harris Rd. Harris Rd. to Odell School Rd. Odell School Rd. to Hwy. 73. East on Hwy. 73 to Kannapolis Parkway. North on Kannapolis Parkway to Trinity Church Rd. Turn left to enter reception center.</li> <li>Rocky River Rd. to Mooresville Rd. Mooresville Rd. to Kannapolis Parkway. South on Kannapolis Parkway to Trinity Church Rd. Turn left to enter reception center.</li> </ul>	Northwest Cabarrus Middle School

**FIGURE B-2 | MCGUIRE NUCLEAR STATION (MECKLENBURG COUNTY) EVACUATION ROUTES AND RECEPTION CENTERS (CONTINUED)**



Evacuation Routes and Reception Centers for the General Public (continued)

Zone	Communities	Primary evacuation route	Reception centers
H	I-77 at the Iredell Co. line to Grey Rd. to Davidson city limits, follow the Cornelius city limits back to I-77, back to the Iredell Co. line	<ul style="list-style-type: none"> <li>I-77 North to Exit 45, to reception centers.</li> </ul>	<p>South Iredell High School</p> <p>West Iredell High School</p>
I	Long Camp, Mayhew	<ul style="list-style-type: none"> <li>Brawley School Rd. (SR1100) north to Williamson Rd. (SR1109). Williamson Rd. (SR1109) north to NC 150. NC 150 east to I-77. North on I-77 to Exit 42 to the reception centers.</li> </ul>	<p>South Iredell High School</p> <p>West Iredell High School</p>
J	Mt. Mourne Langtree, Queens Cove, Catalina	<ul style="list-style-type: none"> <li>NC 115 to Fairview Rd., to Medical Park Rd., south on Hwy. 21 to I-77. North on I-77 to Exit 42 to reception centers.</li> <li>Alcove Road north to SR1109. East on SR1109 to I-77. North on I-77 to exit 42 to reception centers.</li> </ul>	<p>South Iredell High School</p> <p>West Iredell High School</p>
K	Keistlers Store	<ul style="list-style-type: none"> <li>Take Hwy. 150 to Hwy. 16. Go north on Hwy. 16. Continue on Hwy. 16 north to Buffalo Shoals Rd. Turn Right onto Buffalo Shoals Rd. Turn left onto Shiloh Rd. School is on the left.</li> </ul>	<p>Mill Creek Middle School</p>
L	Portion of East Lincoln Fire District	<ul style="list-style-type: none"> <li>NC 73 west to NC 27 through Lincolnton to courthouse. Follow circle to North Aspen St. to Lincolnton High School.</li> </ul>	<p>Lincolnton High School</p>
		<ul style="list-style-type: none"> <li>Take Hwy 150 to Hwy 16. Go north on Hwy 16. Continue on Hwy 16 north to Buffalo Shoals Rd. Turn Right onto Buffalo Shoals Rd. Turn left onto Shiloh Rd. School is on the left.</li> </ul>	<p>Mill Creek Middle School</p>
		<ul style="list-style-type: none"> <li>NC 73 west to NC 27. NC 27 west through Lincolnton to Shoal Rd. (SR1002) to West Lincoln High School.</li> </ul>	<p>West Lincoln High School</p>
M	Portion of East Lincoln Fire District	<ul style="list-style-type: none"> <li>NC 73 west to NC 27, west through Lincolnton to courthouse. Follow circle to North Aspen St. to Lincolnton High School.</li> </ul>	<p>Lincolnton High School</p>
		<ul style="list-style-type: none"> <li>NC 73 west to NC 27. NC 27 west through Lincolnton to Shoal Rd. (SR1002) to West Lincoln High School.</li> </ul>	<p>West Lincoln High School</p>
N	Triangle	<ul style="list-style-type: none"> <li>NC 73 west to NC 27. NC 27 west through Lincolnton to courthouse. Follow circle to North Aspen St. to Lincolnton High School.</li> </ul>	<p>Lincolnton High School</p>
O	Lowesville	<ul style="list-style-type: none"> <li>NC 16 to NC 73, west on NC 73 to NC 27. Continue west through Lincolnton to courthouse. Follow circle to North Aspen St. to Lincolnton High School.</li> </ul>	<p>Lincolnton High School</p>

**FIGURE B-2 | MCGUIRE NUCLEAR STATION (MECKLENBURG COUNTY) EVACUATION ROUTES AND RECEPTION CENTERS (CONTINUED)**



Evacuation Routes and Reception Centers for the General Public (continued)

Zone	Communities	Primary evacuation route	Reception centers
P	Denver, Kidville, Webbs Chapel, Westport	<ul style="list-style-type: none"> <li>NC 27 west through Lincolnton to courthouse. Follow circle to North Aspen St. to Lincolnton High School.</li> </ul>	Lincolnton High School
		<ul style="list-style-type: none"> <li>NC 73 west to NC 27. NC 27 west through Lincolnton to Shoal Rd. (SR1002) to West Lincoln High School.</li> </ul>	West Lincoln High School
		<ul style="list-style-type: none"> <li>Take Hwy. 150 to Hwy. 16. Go north on Hwy. 16. Continue on Hwy. 16 north to Buffalo Shoals Rd. Turn Right onto Buffalo Shoals Rd. Turn left onto Shiloh Rd. School is on the left.</li> </ul>	Mill Creek Middle School
Q	Portion of Alexis Fire District, Portion of Pumpkin Center Fire District	<ul style="list-style-type: none"> <li>NC 27 or NC 73 west through Lincolnton to courthouse. Follow circle to North Aspen St. to Lincolnton High School.</li> </ul>	Lincolnton High School
		<ul style="list-style-type: none"> <li>NC 27 west through Lincolnton to Shoal Rd. (SR1002) to West Lincoln High School.</li> </ul>	West Lincoln High School
R	Duke Power Village, Lucia	<ul style="list-style-type: none"> <li>NC Hwy 74 (Wilkinson Blvd.) east or west toward Cramerton area. South onto Lakewood Rd. Go a quarter mile and entrance to school is on the left.</li> </ul>	Stuart Cramer High School
S	Alexis, Mount Holly, Stanley	<ul style="list-style-type: none"> <li>NC Hwy 74 (Wilkinson Blvd.) east or west toward Cramerton area. South onto Lakewood Rd. Go a quarter mile and entrance to school is on the left.</li> </ul>	Stuart Cramer High School



## For More Information

If you have questions, please call local emergency management officials at the numbers listed below:

**Catawba County Emergency Management**

828.465.8230 (Day/work hours)

828.464.3112 (After hours/weekend)

**Gaston County Emergency Management**

704.866.3350 (Day/work hours)

704.866.3300 (After hours/weekend)

**Iredell County Emergency Management**

704.878.5353 (Day/work hours)

704.878.3039 (After hours/weekend)

**Lincoln County Emergency Management**

704.736.8660 (Day/work hours)

704.735.8202 (After hours/weekend)

**Charlotte-Mecklenburg County Emergency Management**

704.336.2412 (Day/work hours)

704.336.2441 (After hours/weekend)

**North Carolina Emergency Management**

919.733.3300

800.858.0368

[www.readync.org](http://www.readync.org)

[www.ncdps.gov](http://www.ncdps.gov)

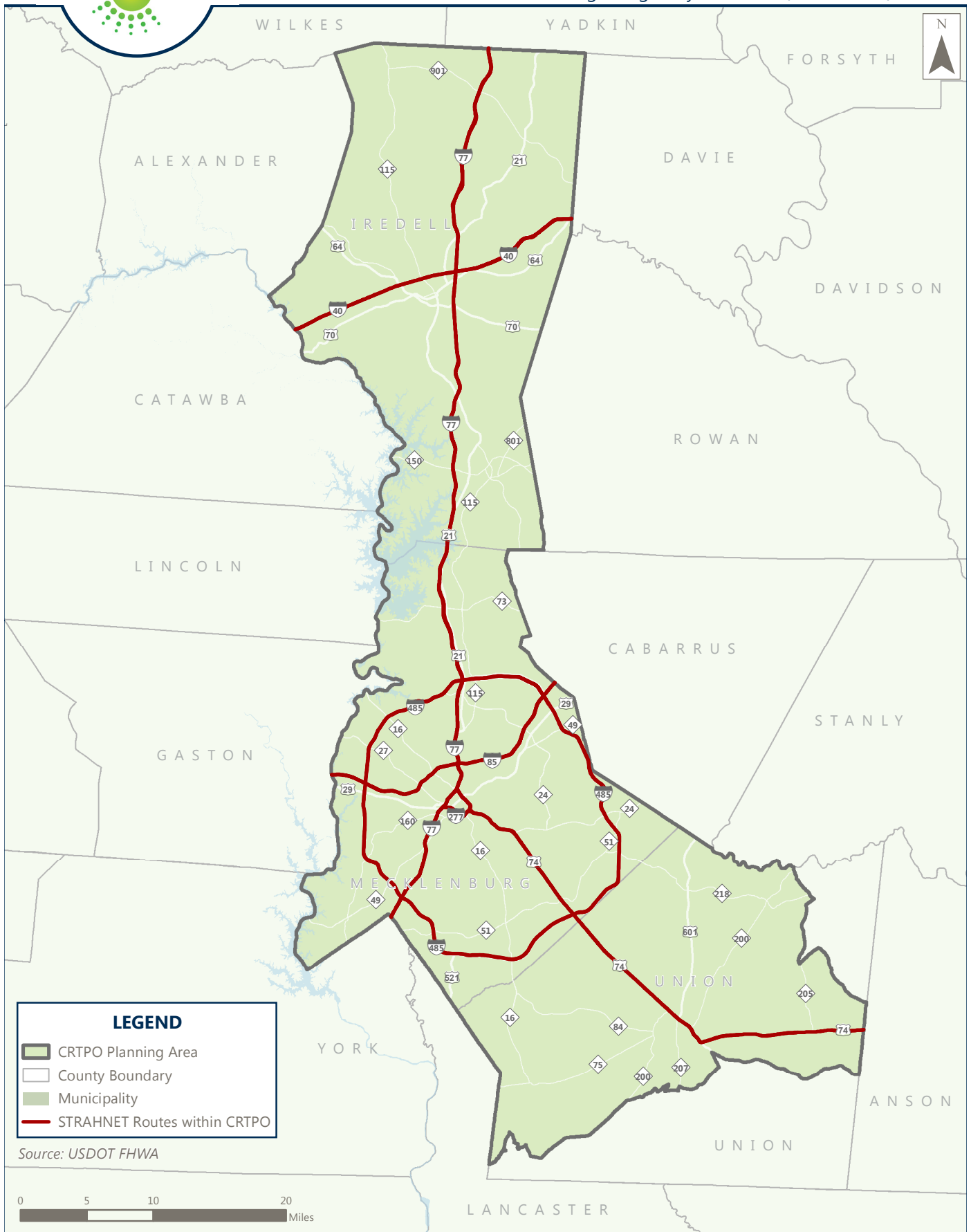
**McGuire Nuclear Station EnergyExplorium**

800.777.0003, option 1

**Duke Energy Customer Contact Center**

800.777.9898





*THIS PAGE LEFT INTENTIONALLY BLANK*